

315 Littleton Road Chelmsford, MA

For Sale/Lease



10,000 Sq. Ft. Office Building

- 10,000 Sq. Ft. Two Story
- 1.3 Acres
- 40 Parking Spaces
- Located on Route 110
- Easy access to Route I-495
- Local amenities include supermarkets, shops and restaurants



www.greaterbostoncp.com

Contact Exclusive Agent:

Benjamin Gatti Executive Vice President
ben@greaterbostoncp.com • 508-273-2133

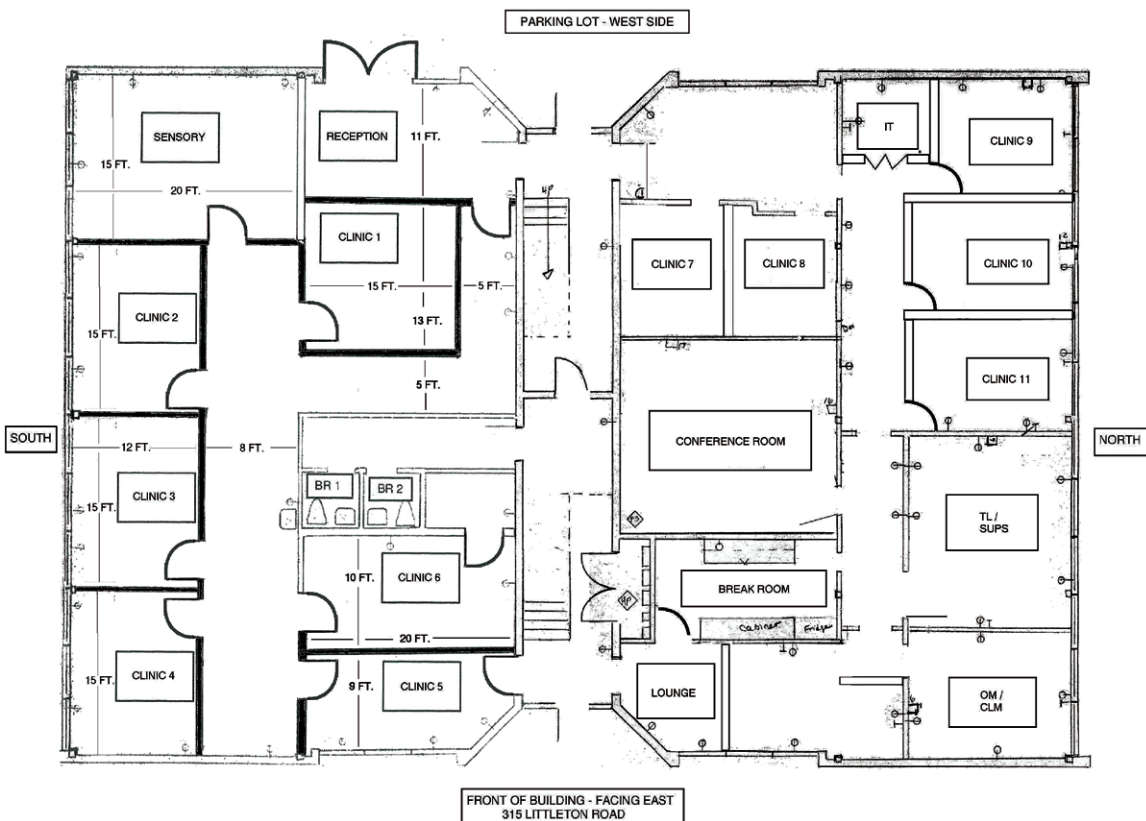
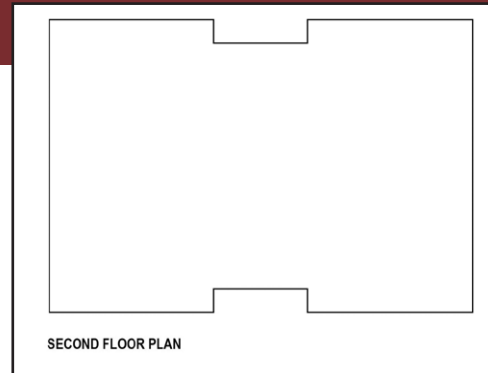
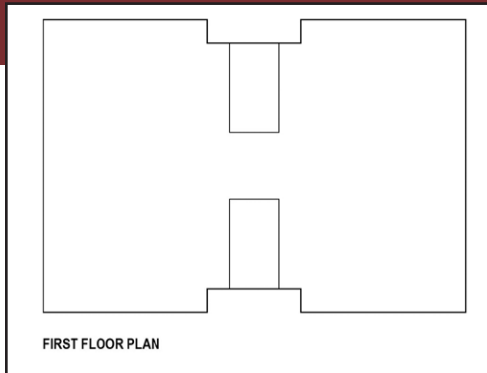
Legal Disclaimer: Every effort has been made to furnish the most accurate information available on this property. However, all statements and conditions contained herein are subject to errors, omissions, prior sale or removal from the market without notice.

GREATER BOSTON COMMERCIAL PROPERTIES INC.

44 Bearfoot Road, Suite 375, Northborough, MA 01532

315 Littleton Road Chelmsford, MA

For Sale/Lease



Contact Exclusive Agent:

Benjamin Gatti Executive Vice President
ben@greaterbostoncp.com • 508-273-2133

www.greaterbostoncp.com

GREATER BOSTON COMMERCIAL PROPERTIES INC.

Legal Disclaimer: Every effort has been made to furnish the most accurate information available on this property. However, all statements and conditions contained herein are subject to errors, omissions, prior sale or removal from the market without notice.

44 Bearfoot Road, Suite 375, Northborough, MA 01532