

# 128 Worcester Providence Turnpike Millbury, MA

## For Sale



Contact Exclusive Agent:

**Nishan Papazian** Vice President  
nishan@greaterbostoncp.com • 508-350-7028

[www.greaterbostoncp.com](http://www.greaterbostoncp.com)

## GREATER BOSTON COMMERCIAL PROPERTIES INC.

44 Bearfoot Road, Suite 375, Northborough, MA 01532

Legal Disclaimer: Every effort has been made to furnish the most accurate information available on this property. However, all statements and conditions contained herein are subject to errors, omissions, prior sale or removal from the market without notice.



# 128 Worcester Providence Turnpike Millbury, MA

# For Sale



## Zoning:

Industrial II, Route 146 Highway  
Corridor Overlay District

## Access:

Two Curb cuts on Route 146 as well  
as easement access to John Road.

## Frontage:

367 Feet of Frontage on Route 146

## Uses by Right:

Manufacturing, Warehousing-  
Wholesale Distribution, Earth Removal,  
Research & Development etc.

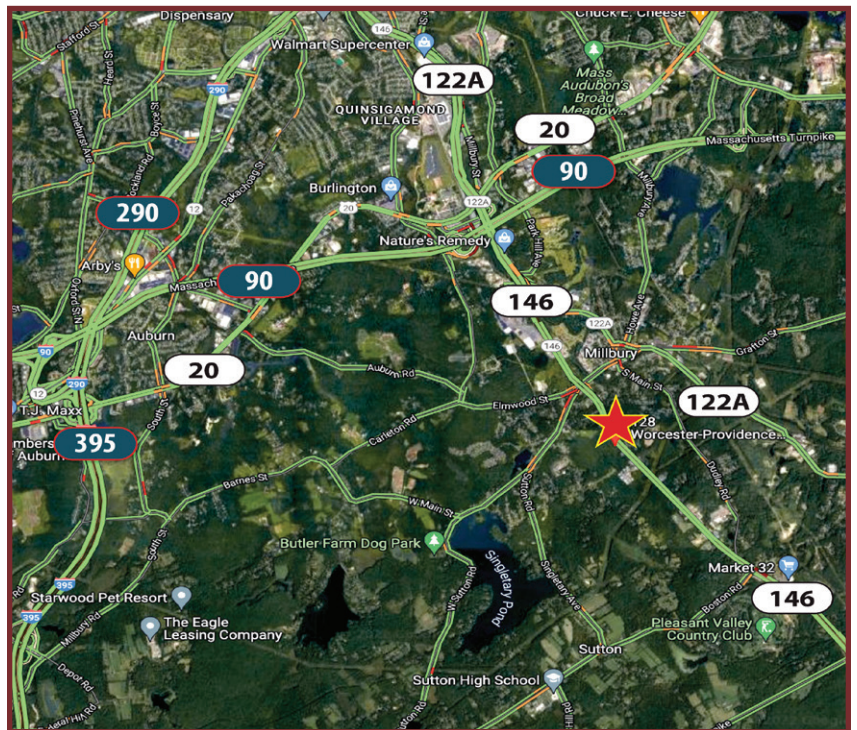
## Special Permit Uses:

Multifamily dwelling, Hotel, Retail,  
Marijuana cultivation/retail/  
manufacturing, Child/Adult Day Care,  
Indoor/Outdoor Recreational Facility etc.

## Contact Exclusive Agent:

**Nishan Papazian** Vice President

nishan@greaterbostoncp.com • 508-350-7028



[www.greaterbostoncp.com](http://www.greaterbostoncp.com)

# GREATER BOSTON COMMERCIAL PROPERTIES INC.

44 Bearfoot Road, Suite 375, Northborough, MA 01532

**Legal Disclaimer:** Every effort has been made to furnish the most accurate information available on this property. However, all statements and conditions contained herein are subject to errors, omissions, prior sale or removal from the market without notice.