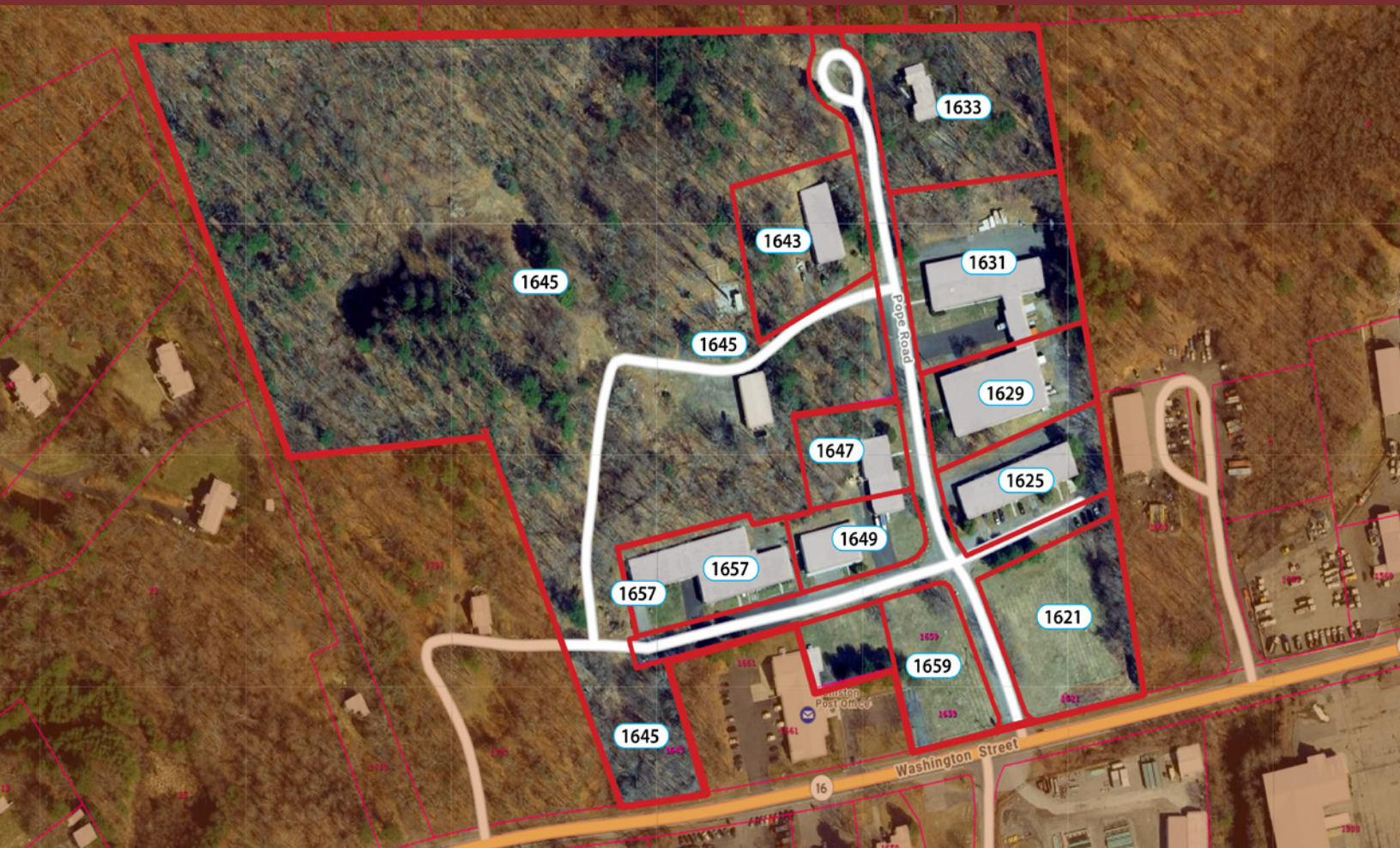


Confidential Investment Offering

Pope Industrial Park Holliston, MA



9 Building 33.88 Acre Industrial Park

Contact Exclusive Agent:

GREATER BOSTON
COMMERCIAL PROPERTIES INC.

James H. Keefe, Vice President

james@greaterbostoncp.com • 508.948.3474

44 Bearfoot Road, Suite 375, Northborough, MA 01532

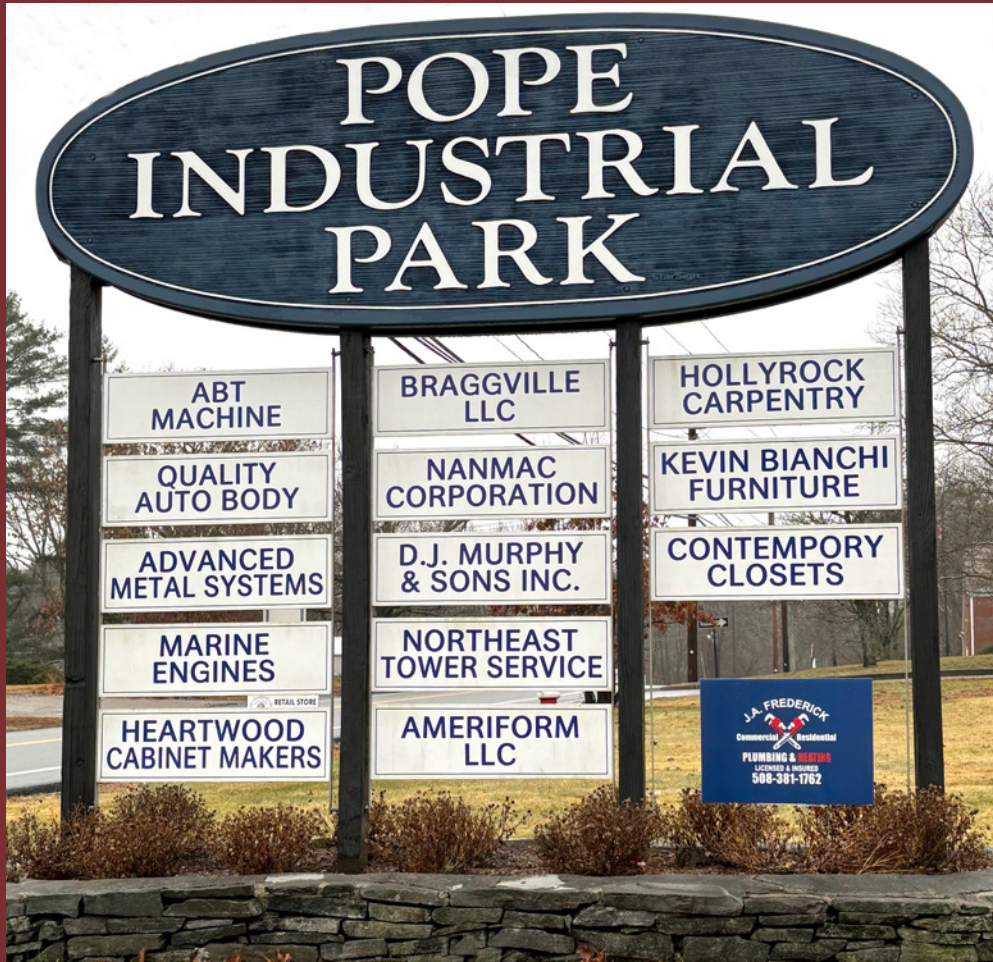


Table of Contents

Details..... 3

Location..... 4

Photos.....5-9

Potential Development 10

Current Rent Roll 11

Projected Rent Roll..... 12

Broker 13

Contact Exclusive Agent:

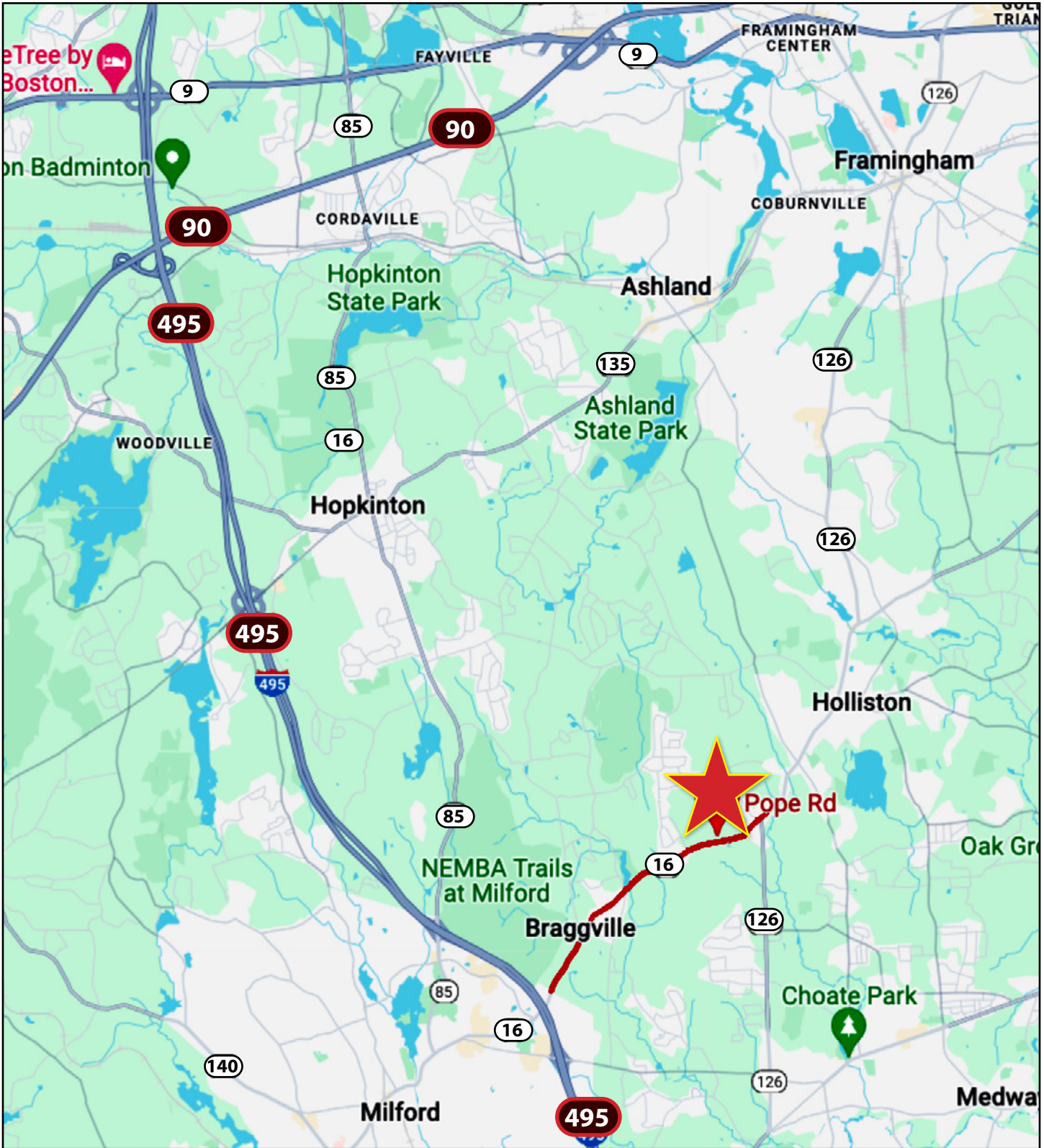
James H. Keefe, Vice President
 james@greaterbostoncp.com
 508-948-3474

LEGAL DISCLAIMER:

Every effort has been made to furnish the most accurate information available on this property. However, all statements and conditions contained herein are subject to errors, omissions, prior sale or removal from the market without notice.



- 9 Buildings
- 84,199 Sq. Ft.
- 33.88 AC
- Industrial Zoning
- 14 Loading Docks
- 15 Drive-In Doors
- 16 Tenants Including Cell Tower & Billboard
- 22 Acres of Undeveloped Land
- On Route 16
- Easy Access to I-495



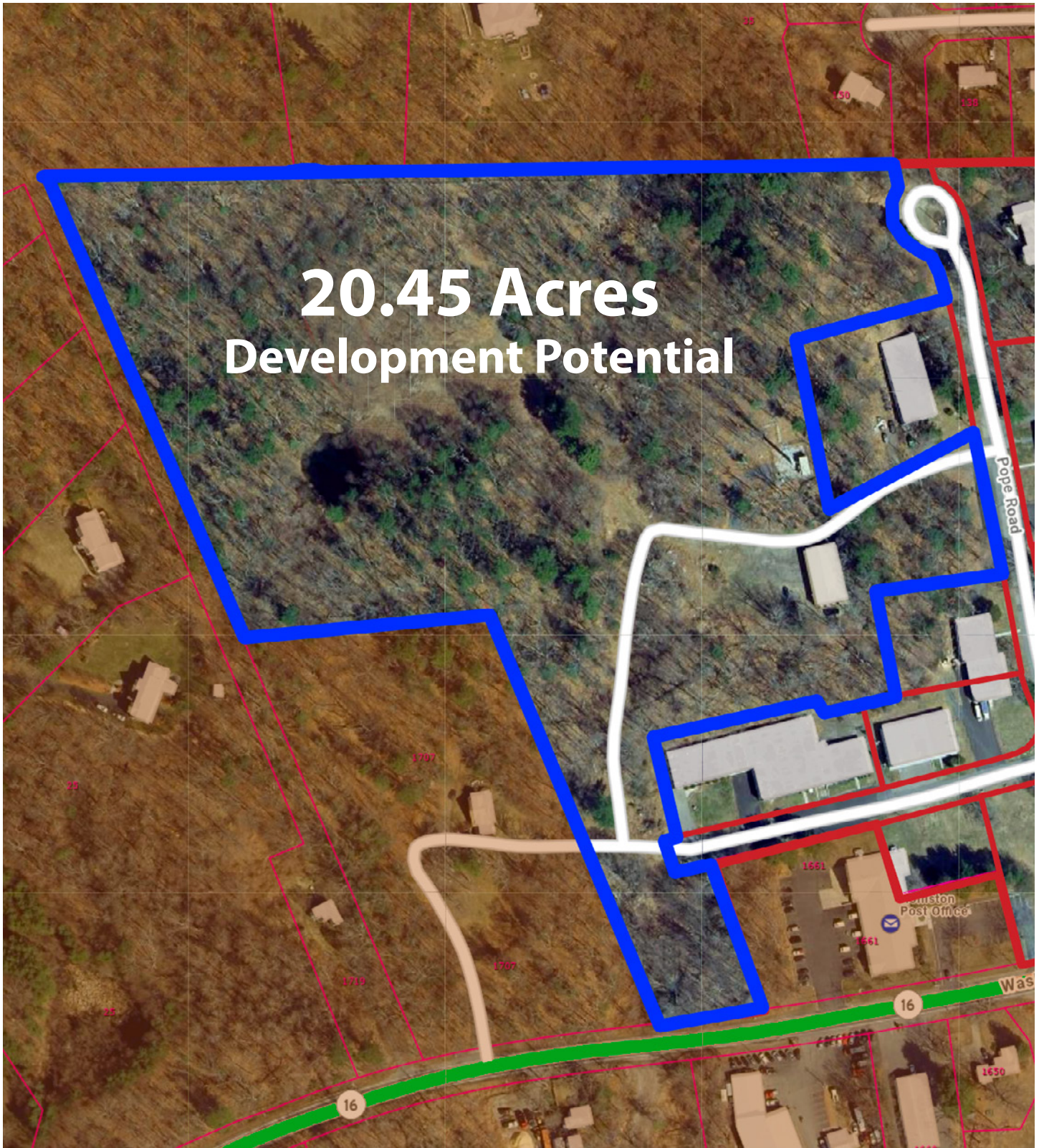












**20.45 Acres
Development Potential**

Broker



James Keefe, *Executive Vice President*
james@greaterbostoncp.com • 508-948-3474

James Keefe earned his Bachelor of Arts in American Studies from Providence College in 2006 after graduating from St. Sebastian's School. James is a native of Wellesley, MA and began his career in commercial real estate with CBRE, working in property management. He spent close to a decade working in private wealth management, where he helped clients minimize their tax burdens when selling real estate assets. In the past year James has sold \$25M in commercial property.